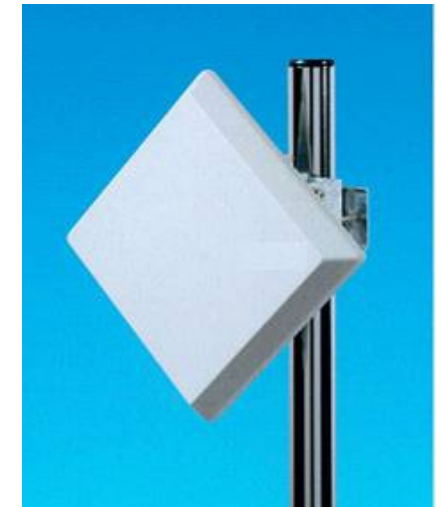


specifications

- frequency : 24.05 - 24.25 GHz
- number of available channels : 8 CH (vertical or horizontal polarization) *theoretically max. 16 CH available*
- occupied bandwidth : 20 MHz
- transmission protocol : unique and nonpublic radio protocol
- antenna : gain: 34dBi, beam angle: 3°
- duplex method : TDD
- Tx power : -1dBm
- modulation : 64QAM, 16QAM, QPSK (adaptive)
- air data rate : 150 Mbps
- throughput : 56 Mbps max
- distance : 10km max
- interference avoidance function : carrier sense, dynamic frequency selection
- network interface : 100BASE-TX
- power supply : by overlapped DC "PoE (Power over Ethernet) compliant with IEEE802.3af"
- size & weight : 290mm x 290mm x 70mm (WxDxH), approx. 3kg (incl. antenna)

SINELINK24G



HITACHI
Inspire the Next

